

FIXING INSTRUCTIONS

FIXING INSTRUCTIONS - Please read through carefully prior to assembly

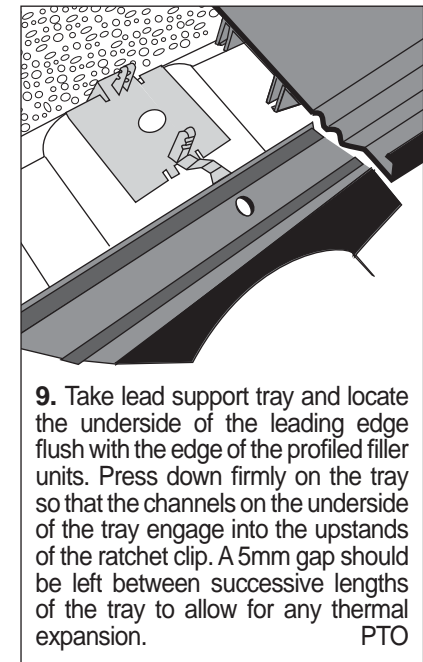
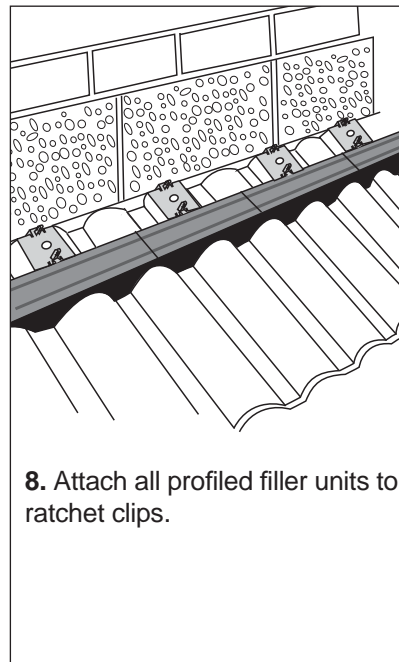
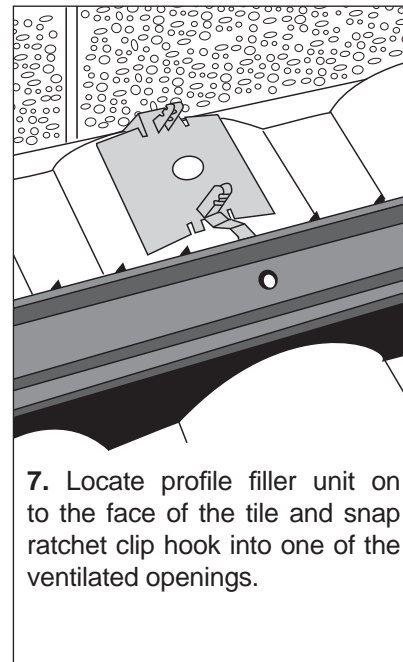
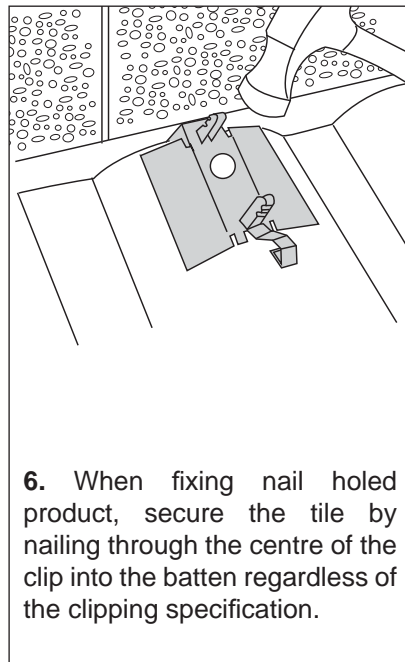
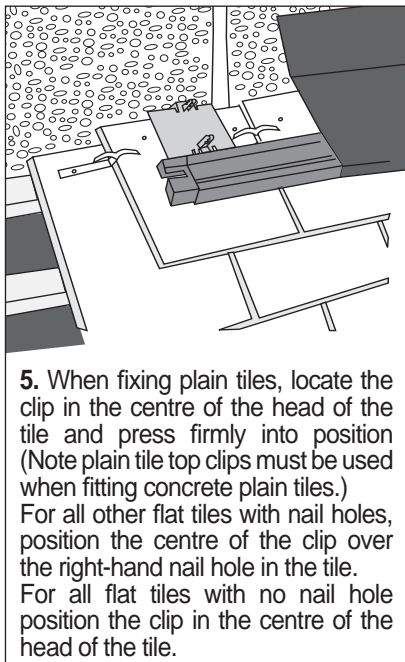
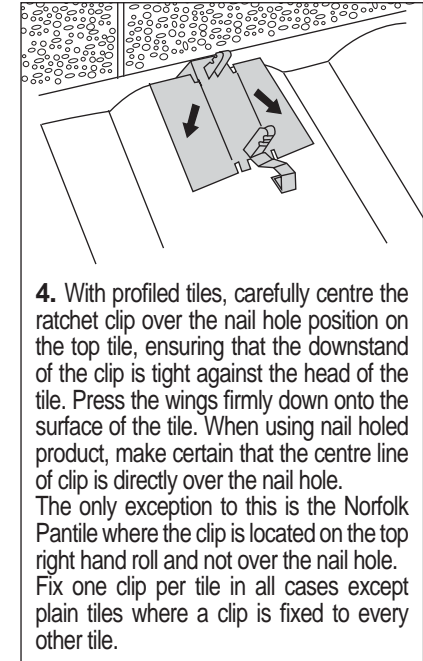
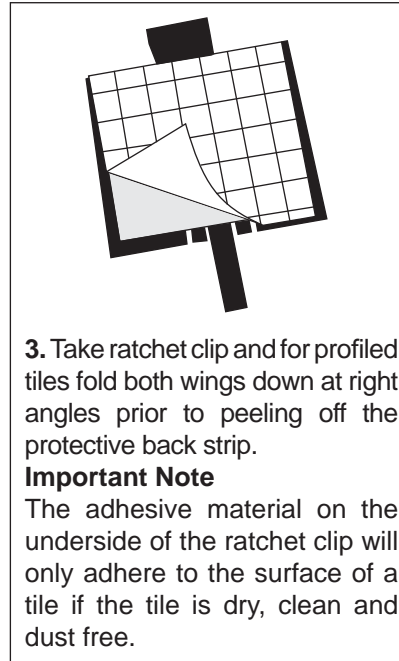
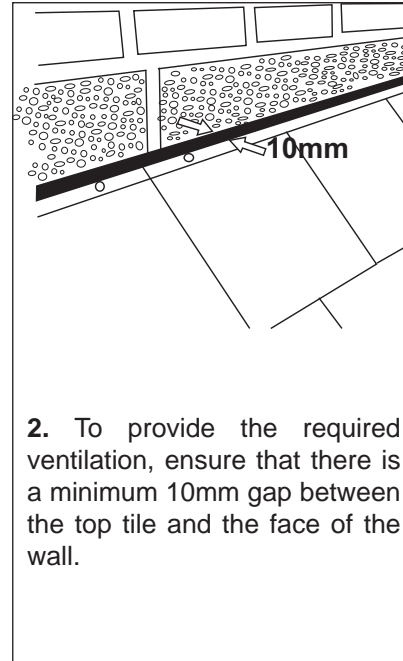
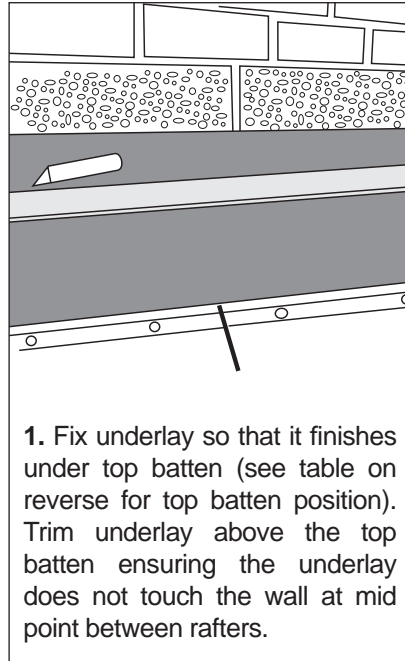
This system is compatible with all Redland profiles with the exception of Redland 49. If you are wishing to use with natural/fibre cement slates, please contact your Regional Sales Office regarding fixing instructions.

Carton Contents:

Flat Concrete Tiles, Slate, Clay: 3 Trays, 10 Clips and 7 Vented Filler Units

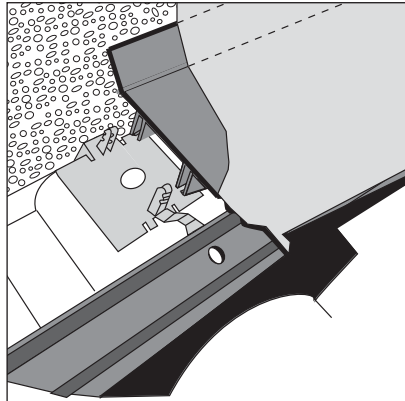
Norfolk Pantile: 3 Trays, 15 Clips and 15 Vented Filler Units

All other packs: 3 Trays, 10 Clips and 10 Vented Filler Units



9 continued. Depending on the pitch of the roof, the hinged rear section of the tray should be folded back to touch the wall.

Continue laying the trays the full length of the abutment, ensuring that any cut lengths of tray are supported by no less than two ratchet clips. Any cut lengths of tray should be positioned in the centre of the abutment.



10. Fix the lead sheet in lengths not exceeding 1.5 metres. Ensure that the lead is firmly engaged into the channel on the leading edge of the tray and that side laps do not correspond with the joints of the lead support trays. Fix and dress the lead as normal in accordance with the recommendations of the Lead Sheet Association.

Pitch Range and Top Batten Distances

Tile & Slate	Range (degrees)	Top Batten down rafter from wall
Landmark Double Pantile	15.0 - 50.0 over 50.0 - 60.0	40mm 30mm
Grovebury	15.0 - 50.0 over 50.0 - 60.0	40mm 30mm
50 Double Roman	17.5 - 60.0	40mm
Regent	12.5 - 50.0 over 50.0 - 60.0	40mm 20mm
Renown	17.5 - 60.0	40mm
Norfolk Pantile	17.5 - 50.0 over 50.0 - 60.0	40mm 20mm
Cambrian	15.0 - 60.0	20mm
Saxon/Valentia	25.0 - 60.0	40mm
Landmark Slate	22.5 - 60.0	40mm
Richmond/Rathlin	22.5 - 60.0	40mm
Stonewold II	17.5 - 44.0	70mm
Mini Stonewold	17.5 - 60.0	40mm
Plain Tile	35.0 - 60.0 over 60.0 - 65.0 over 65.0 - 70.0	65mm 90mm 95mm*
Heathland	35.0 - 60.0 over 60.0 - 65.0 over 65.0 - 70.0	65mm 90mm 95mm*
Downland	35.0 - 60.0 over 60.0 - 65.0 over 65.0 - 70.0	65mm 90mm 95mm*
DuoPlain	25.0 - 60.0 over 60.0 - 65.0 over 65.0 - 70.0	65mm 90mm 95mm*
Rosemary Clay Plain Tile	35.0 - 60.0	1st Batten 20mm 2nd Batten 60mm

* Standard 65mm batten nail can be used for pitches over 67.5 degrees up to and including 70 degrees, if nail is skewed down at approximately 20 degrees, and punched in (or longer nail used) to achieve 40mm penetration into rafter.

